

Baltimore SSO

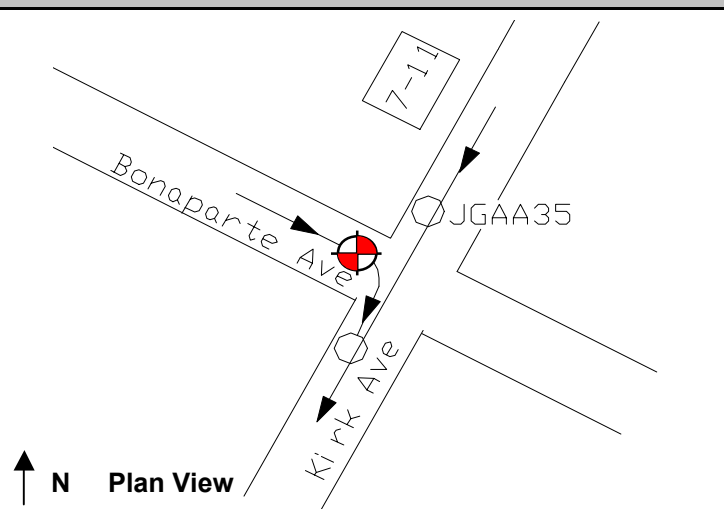
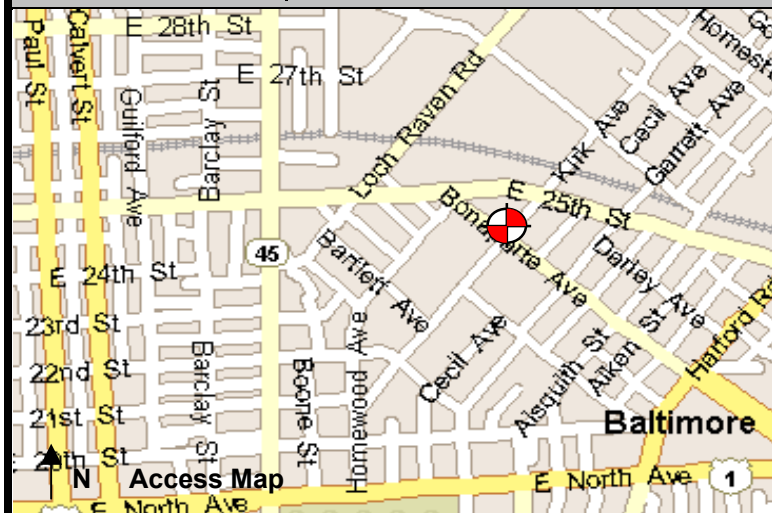
Site Investigation Report

FM Initials: DF

Project: 07 Greenmount Ave Interceptor

Site Name:	07_JGA30I	Monitor Series:	4000	Monitor S/N:	1179	Manhole #:	JGA30	Investigation Information:
Address / Location:	Bonaparte Ave & Kirk Ave	Map Page #:	8	Map Grid #:	39QQ	Upstream Input: (L/S, P/S) N/A		
		Pipe Height:	24"	Pipe Width:	24"	Upstream Manhole: JGA29		
		Telephone #:	166.142.224.162			Downstream Manhole: JGA32		
Access:	Drive	GPS Coords:	N DD.dddd 39 19.030		W DD.dddd 76 36.180		Depth of Flow: 10.5"	

Date/Time of Investigation: 4/3/2003 9:30


Smooth flow
4" to 5" of silt

Manhole Information:

Manhole Depth: 20'

Manhole Material/Condition:
Brick / Poor

Active Drop Connections?
N/A

System Character:

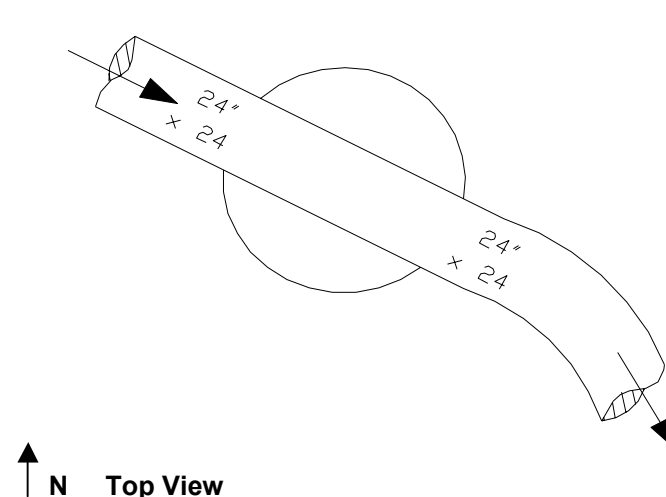
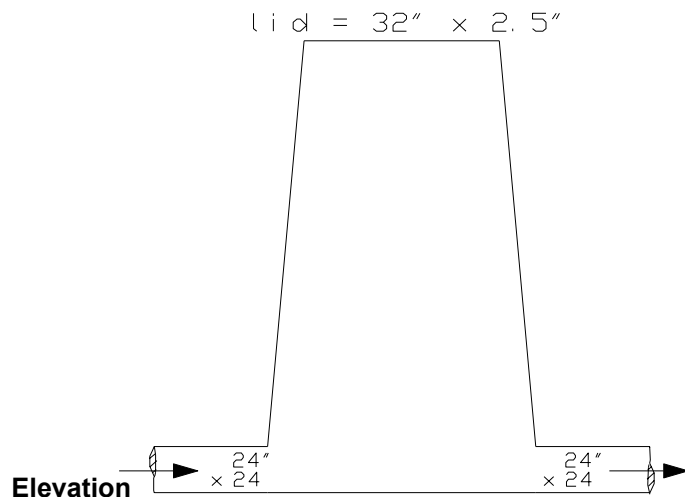
- ☒ Residential
- ☒ Commercial
- ☐ Industrial

Notes:

- Bottom 6' to 7' of mh leaks
- Pipe bends to right after exiting mh
- Sever mineral deposits

Legend:
 Cast Iron Flap Valve

N.T.S.- Not to scale
SS- Sanitary Sewer
SWS- Storm Water Sewer



The monitoring period ended as of December 31, 2004.